

# GlossFix 60

## Precise gloss measurements of painted surfaces and very high gloss surfaces

The extremely small and lightweight gauge, with a 60° measuring geometry, determines the gloss (in gloss units – GU) of surfaces from mat to high gloss polished. It enables the user to carry out instant measurements on small areas as well as on difficult to access areas.

### Definition of gloss

According to the standard EN 927-1 gloss is defined in gloss units using a glossmeter with 60° measuring geometry:

Matt:	up to 10 GU
Half-matt:	10 to 35 GU
Semi gloss:	35 to 60 GU
Gloss polished:	60 to 80 GU
High gloss polished:	above 80 GU

Usually gloss of paint and varnishes are measured in gloss-units (GU) between 0 and approx. 80 to 100 GU. The indicated number is not a value in percent. 100 GU are defined as a reflection value using a black polished glass standard with a refraction index of 1.57.

### Instrument features

- Very high accuracy
- Single key operation
- Fully automatic calibration with an integrated measurement standard inside the holder
- Display backlight
- Statistical evaluation of the measurement readings
- Data transfer to a PC via USB or RS232 using the software "My Gloss"
- Long term stability of the light source, wear-free
- Battery operation
- Battery indicator
- Standards: DIN 67530, DIN EN ISO 2813, EN ISO 7668, GB/T 9754, ASTM D 523, ASTM D 2457, JIS Z 8741



GlossFix 60:  
The world's smallest 60° Glossmeter  
with high accuracy



### Fields of Application

GlossFix 60 is made for gloss measurements e. g. on:

- Paintwork on cars, electronic appliances, furniture and musical instruments
- Anodized aluminum and other metal surfaces
- Parquet floors, marble, granite and ceramic tiles
- Printing ink on paper and plastic
- Surfaces of paper, plastics, wood etc.



**PHYNIX** 

Physikalische Oberflächen-Messtechnik  
Physical Surface Testing Technology

# Specifications

## for GlossFix 60

### Measurement geometry:

60°

### Measurement range:

0 – 99.9 GU

100 – 1999 GU

### Repeatability:

± 0.2 GE (0 – 99.9 GU)

± 0.2 % (100 – 1999 GU)

### Tolerance:

± 0.5 GU (0 – 99.9 GU)

± 0.5 % (100 – 1999 GU)

### Display:

3 resp. 4 digits, height 10 mm (0.4"), backlight

### Statistics:

from max. 10 values

### Measurement spot:

9 mm x 18 mm (0.35" x 0.7")

### Light source:

D65

### Power supply:

1.5 V, LRO3 (AAA)

### Battery life duration:

60h or 10,000 readings

### Ambient temperature:

-10 °C to + 60 °C (14 °F to 140 °F)

### Relative humidity:

85% (no condensed water)

### Dimensions:

83 mm x 46 mm x 30 mm (3.3" x 1.8" x 1.2")

### Weight (gauge, without battery):

100 g (3.5 oz)

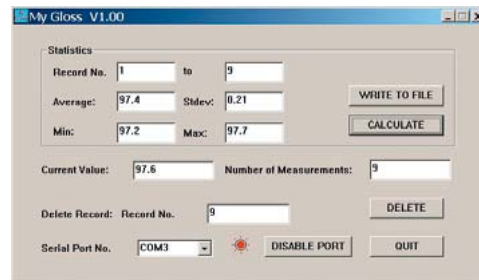
### Weight (complete with carrying case):

650 g (22.9 oz)

### Software "My Gloss"

Transfer program for GlossFix 60.

The measurement values are transferred in a pre-compiled template for spreadsheet programs together with statistical data.



Sample	Mean	Date & Time
1	97.2	2009/10/26 14:49:05
2	97.2	2009/10/26 14:49:06
3	97.2	2009/10/26 14:49:07
4	97.2	2009/10/26 14:49:08
5	97.6	2009/10/26 14:49:09
6	97.3	2009/10/26 14:49:10
7	97.7	2009/10/26 14:49:11
8	97.5	2009/10/26 14:49:12
9	97.6	2009/10/26 14:49:13
Number of Measurements: 9		
Average: 97.4 Stdev: 0.21 Toler: 0.5 GU		

### Delivery Schedule

Gauge Glossfix 60 incl. holder with calibration gloss standard, wrist strap, duster, operating manual, USB-RS232 interface cable, "My Gloss" software, manufacturer's certificate, battery, carrying case.



Physikalische Oberflächen-Messtechnik  
Physical Surface Testing Technology

### PHYNIX GmbH & Co. KG

Alexe-Altenkirch-Straße 3

50739 Köln, Germany

Phone +49(0)221/17964-30

info@phynix.de

Fax +49(0)221/17964-35

www.phynix.de

